

Eastern Area Planning Committee

20th April 2023

7a) PL/2022/00977 Land to the north of Horton Road, south of London Road and west of Wellington Drive, Devizes

Outline planning application with all matters reserved except access for up to 25,000 sqm of use class B2 (General Industrial), B8 (Storage and Distribution) and E (Commercial, Business and Service) (g) (i-iii), with landscaping and associated infrastructure.

Recommendation: Approve with Conditions

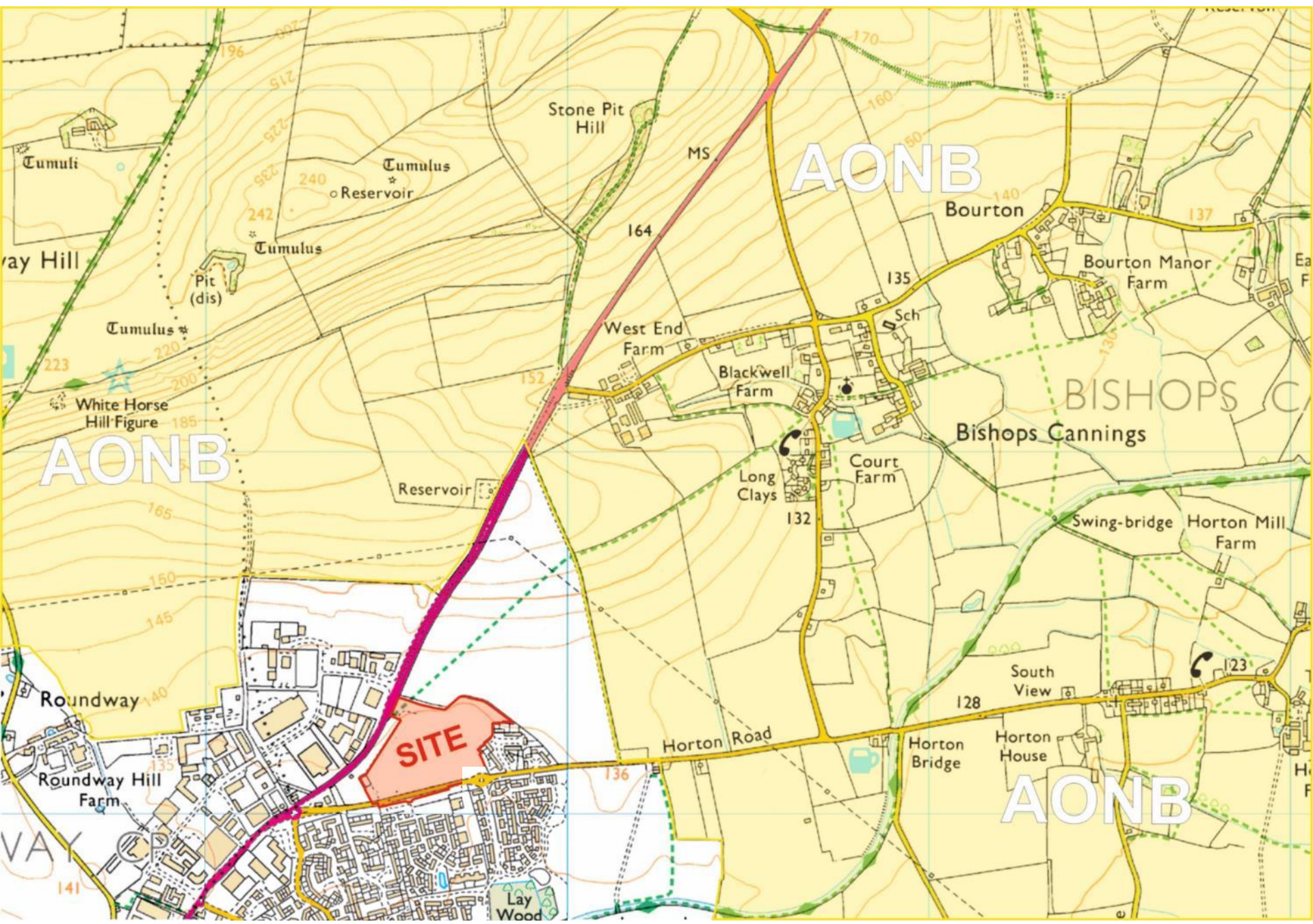


Site Location Plan

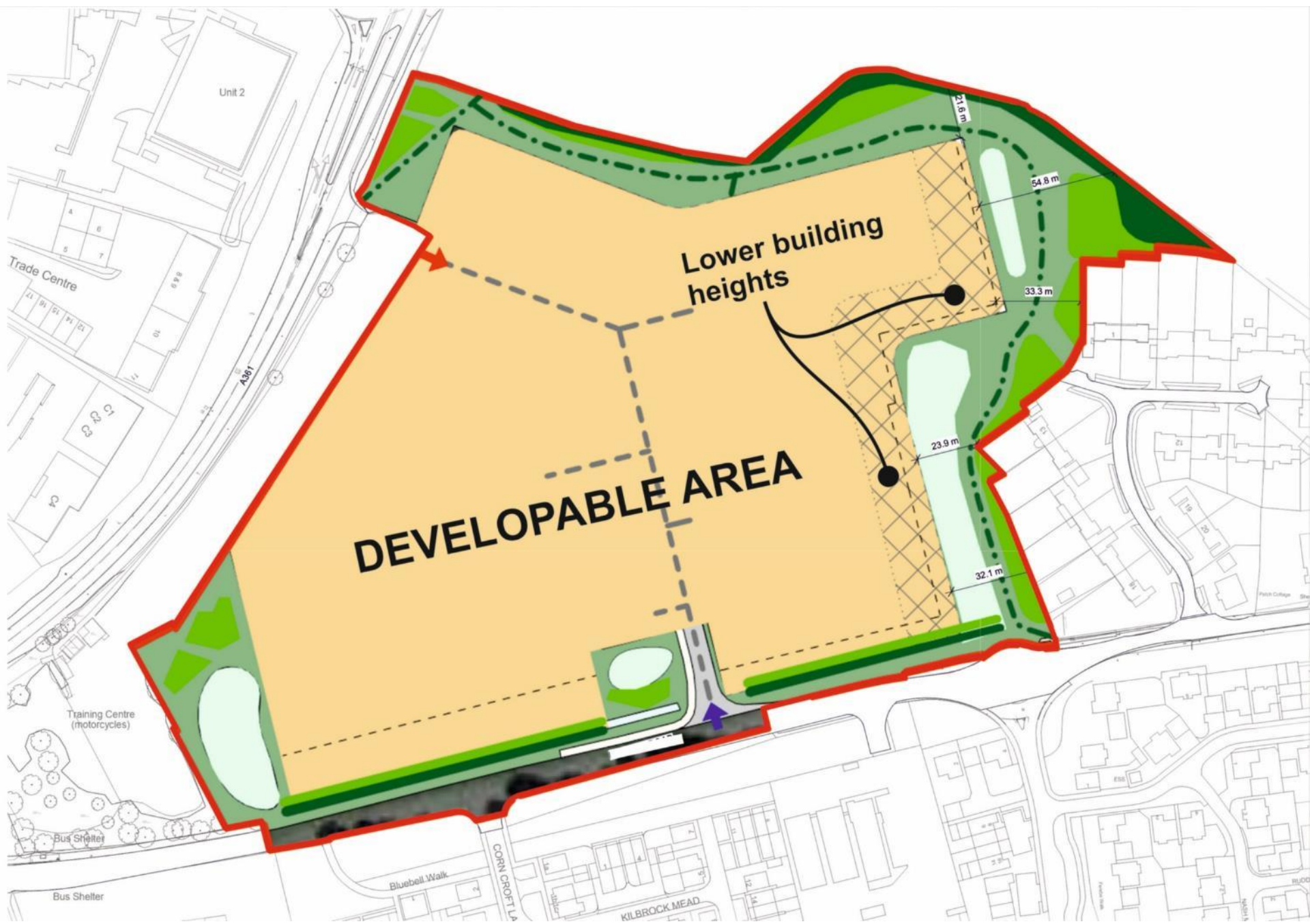


Aerial Photography





WIDER LOCATION/ AONB



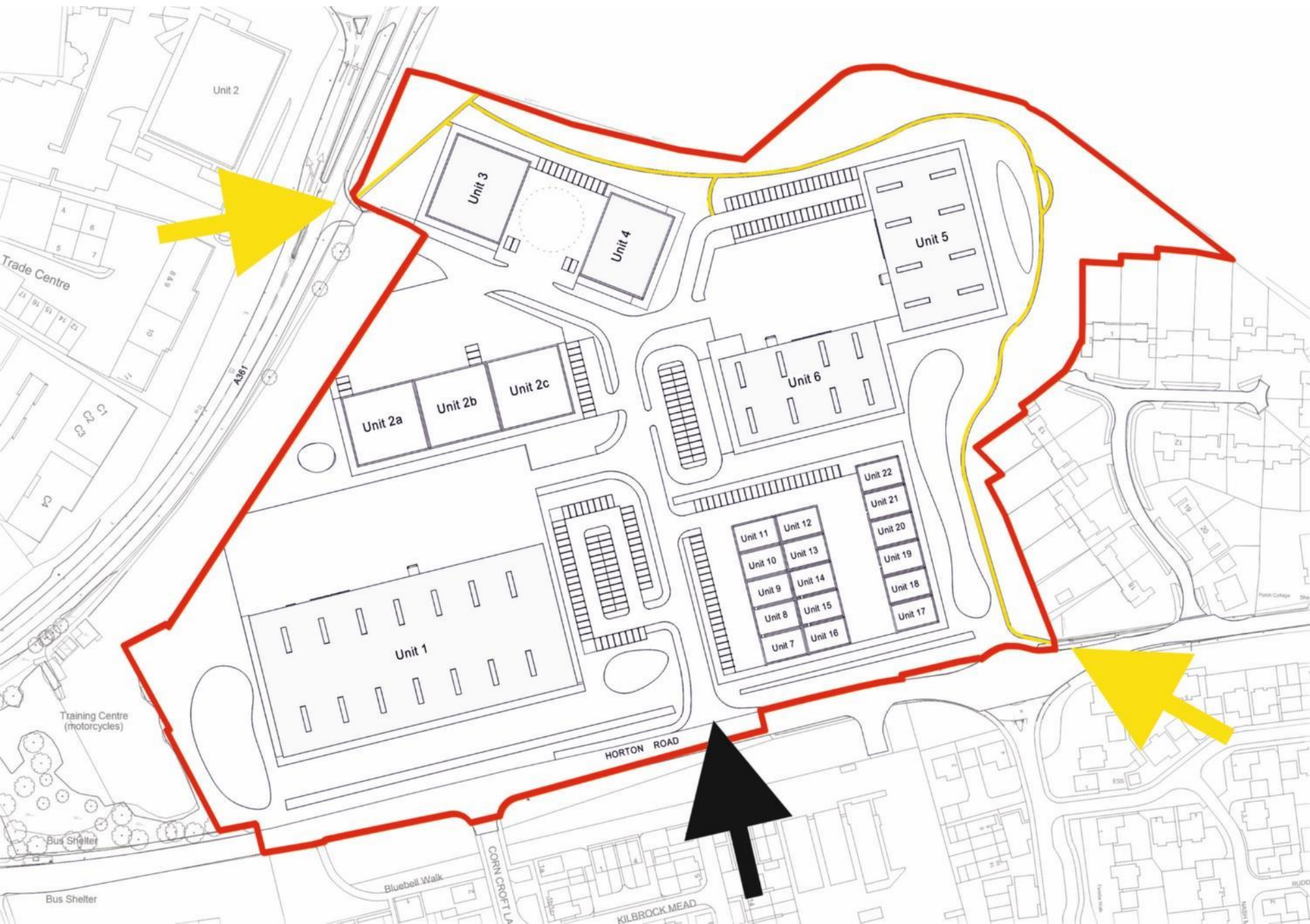
DEVELOPMENT FRAMEWORK



ILLUSTRATIVE LAYOUT



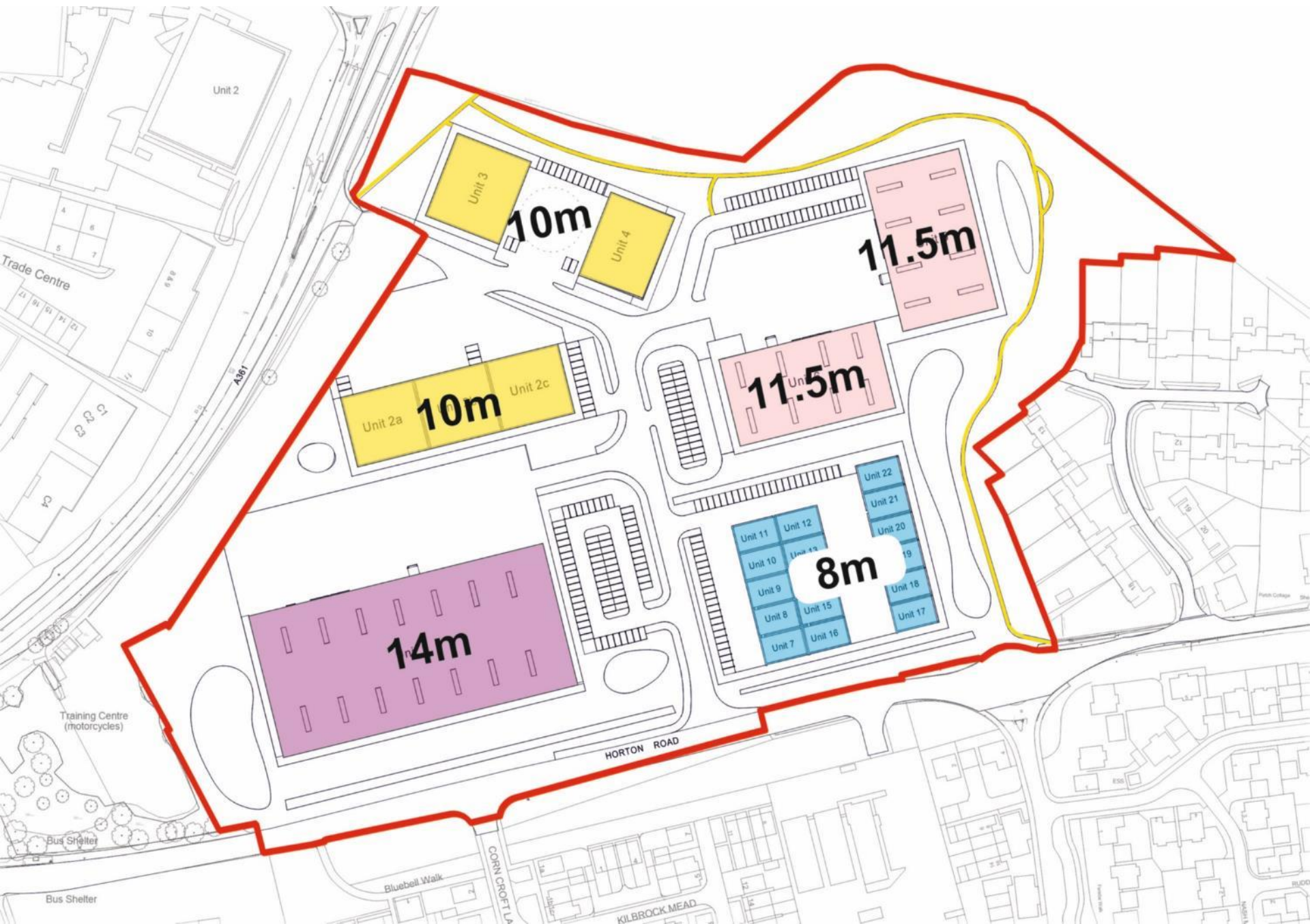
ALLOCATED SITE REMAINDER



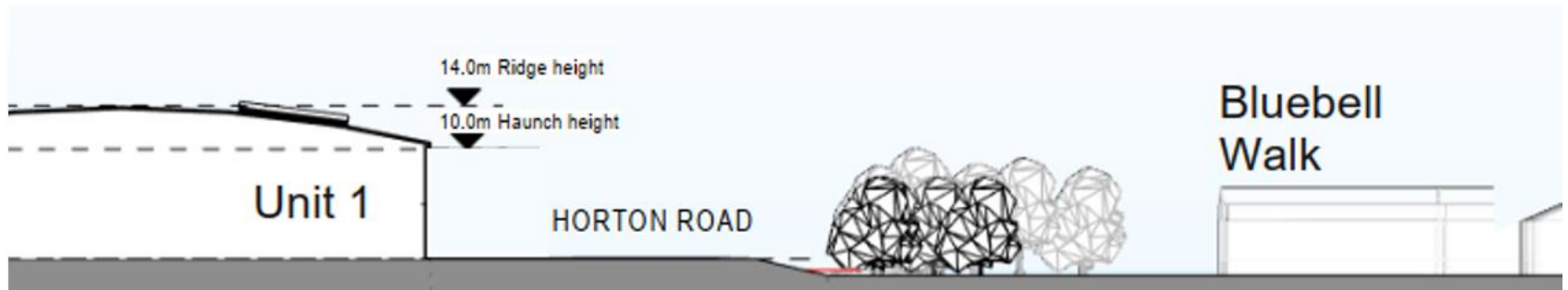
ACCESS TO BE CONSIDERED



LANDSCAPE STRATEGY



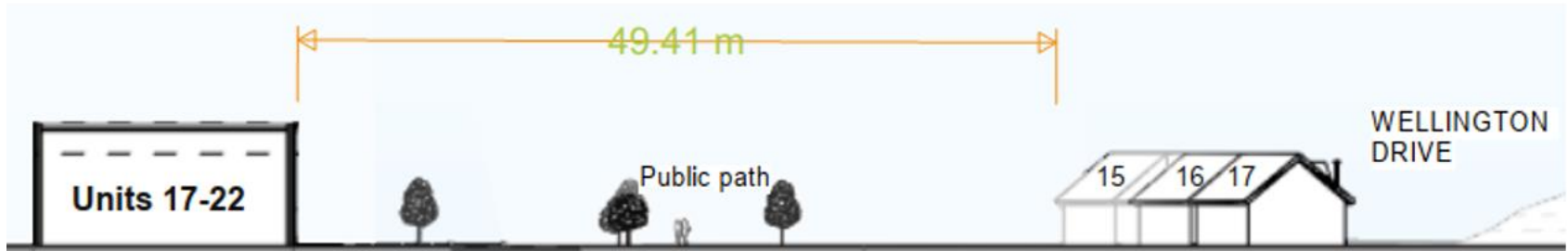
ILLUSTRATIVE BUILDING HEIGHTS



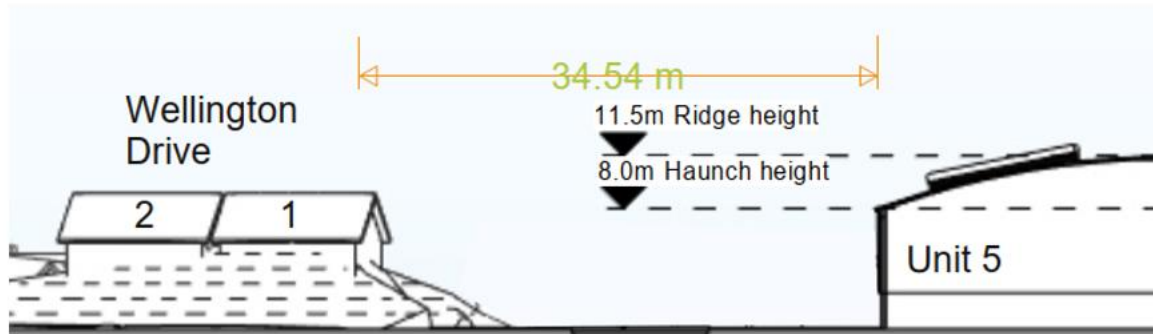
Cross section facing east at Bluebell Walk



Cross section facing west at Ernle Drive



Cross section facing north adjacent to Wellington Drive



Cross section facing south adjacent to 1 Wellington Drive



VIEW SOUTH FROM A361 / WALLER ROAD TOWARDS SITE



ZOOMED VIEW ACROSS SITE TOWARDS WELLINGTON DRIVE



VIEWS HEADING EAST ALONG HORTON ROAD 1 of 4



VIEWS HEADING EAST ALONG HORTON ROAD 2 of 4



POSITION OF SITE ENTRANCE (APPROX) - 3 of 4



VIEWS HEADING EAST ALONG HORTON ROAD 4 of 4



VIEWS ACROSS SITE - HORTON ROAD TOWARDS HOPTON PARK



CANNINGS HILL ROUNDABOUT – KERB REALIGNMENT



LANDSCAPE VIEW – FROM HIGH GROUND AT ROUNDWAY TO NE



LANDSCAPE VIEW – FROM FOOTPATH BCAN6 TO THE NORTH



LANDSCAPE VIEW – NORTHWARDS FROM SOUTH SIDE OF HORTON ROAD



LANDSCAPE VIEW – WEST FROM END OF WELLINGTON DRIVE

Eastern Area Planning Committee

20th April 2023